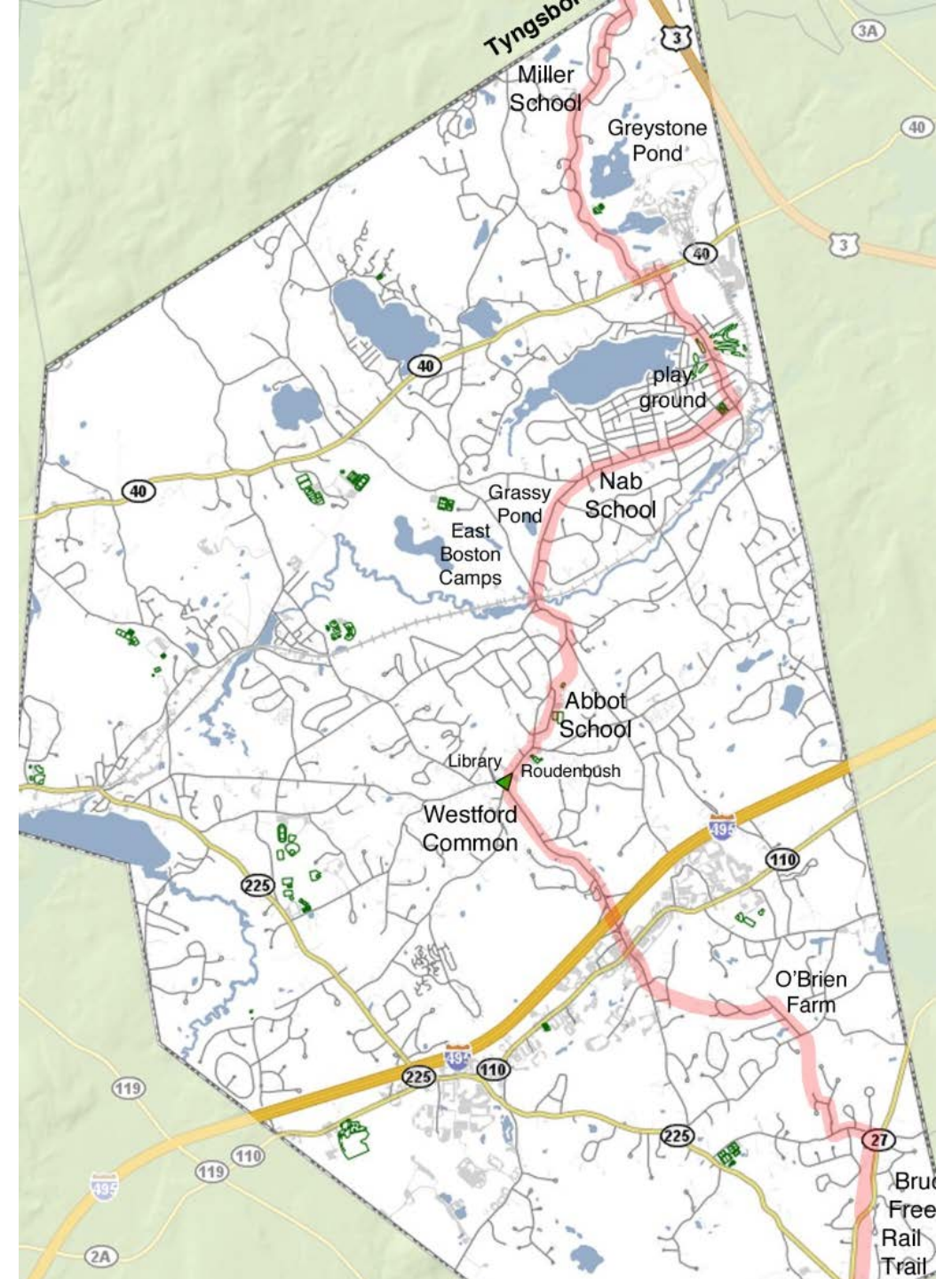


Core Westford Walkway

January 26, 2021

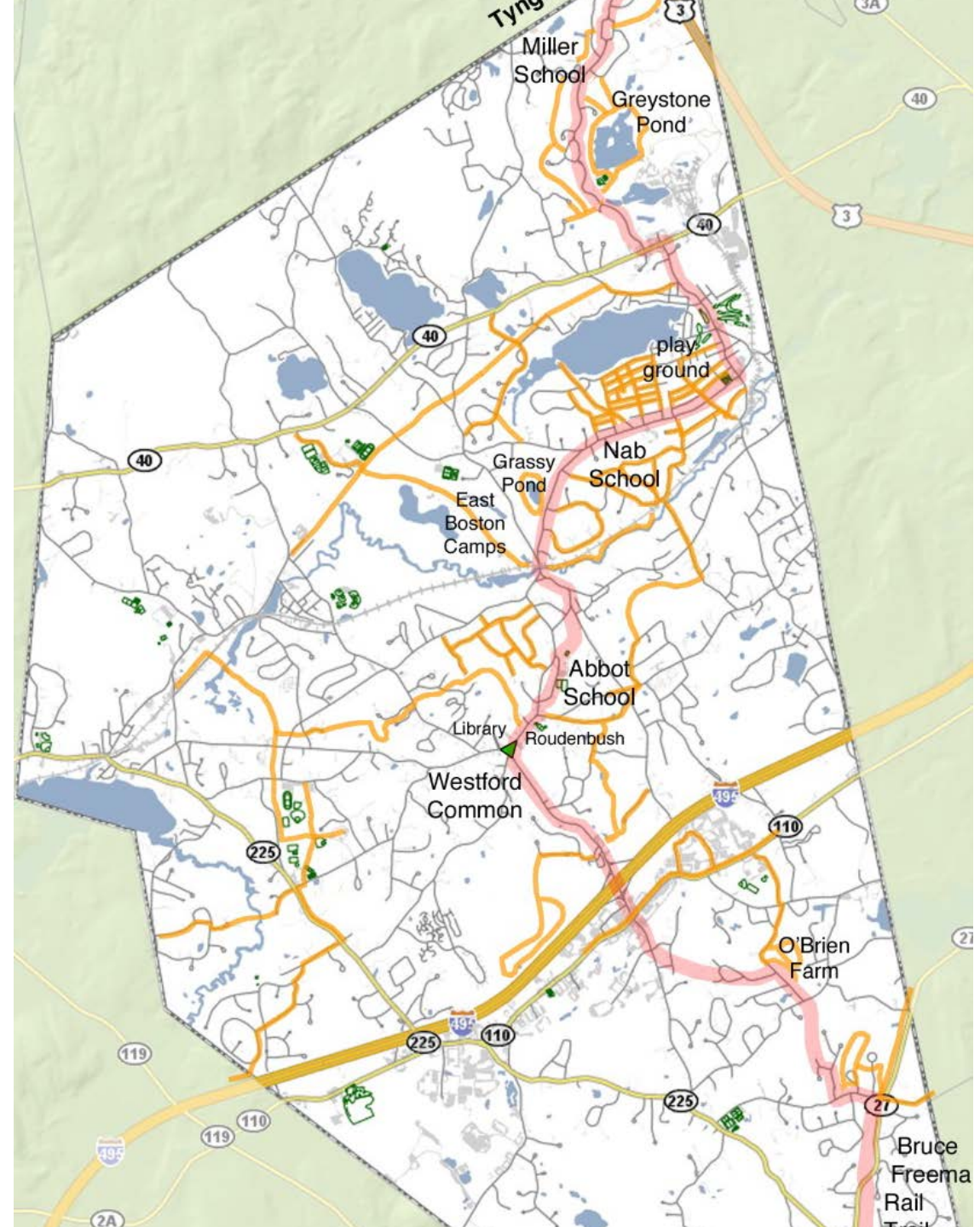
Features

- Covers entire length of Westford
- Links populated areas & destinations
- Much already exists
- Takes advantage of planned sidewalks
- Consists of sidewalks, trails & roads with light traffic



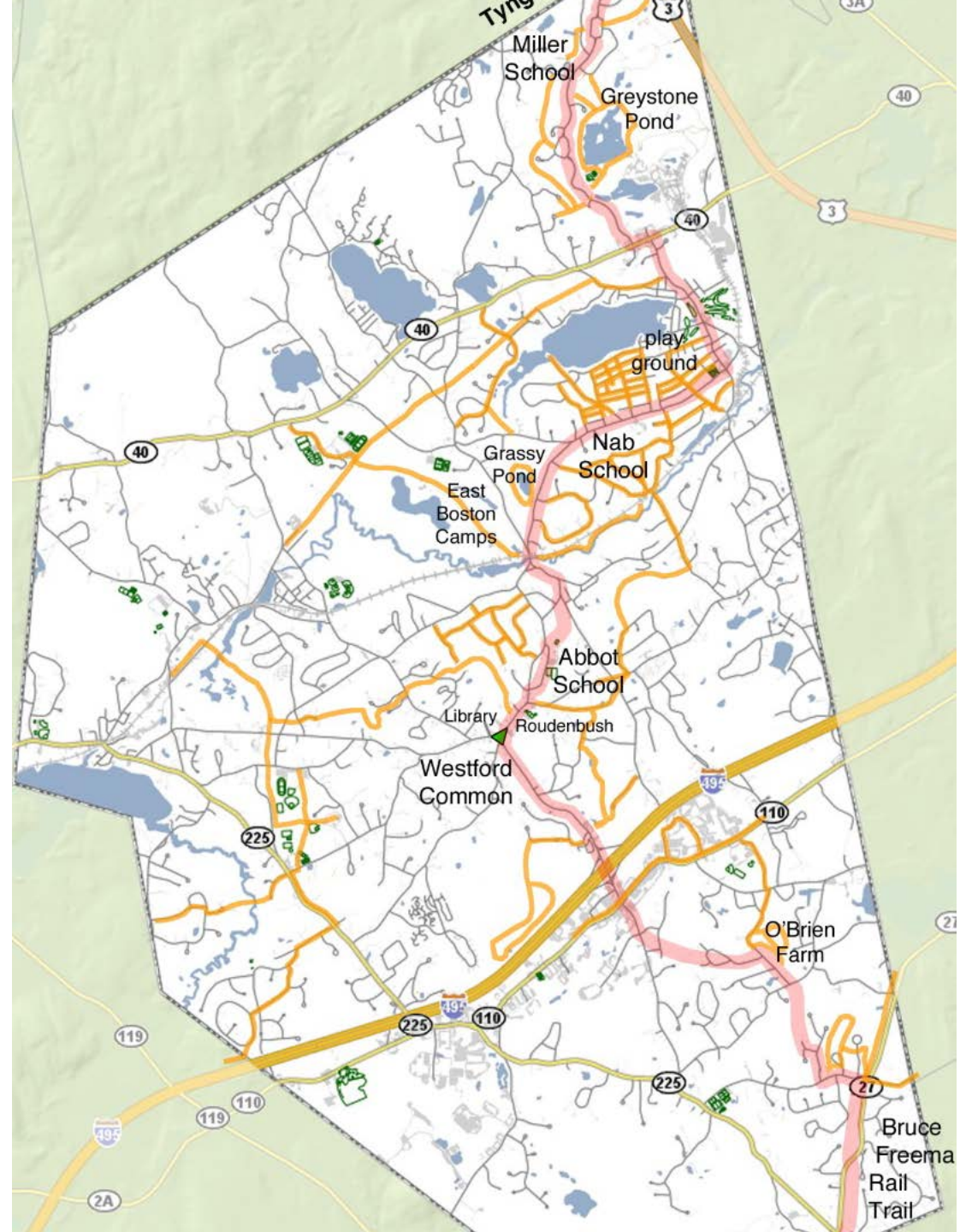
More Features

- Forms core of walkway network
- Connects to town center, 5 schools, >20 conservation areas, commercial district
- 3 gaps remain



Objectives

- Link neighborhoods & connect to destinations
- Enhance Westford's walkability
 - Highlight our progress
- Map of interconnected walkways
 - Information on town walking routes
 - Facilitate planning
- Provide inspiration for additional connecting walkways



HW/PSC Request

- Support of \$80K phase 1 Plain Rd walkway design fund request previously submitted to Capital Planning
 - Has been on PSC priority list for years
 - Fills Gap 1
 - Considering wheelchair accessible trail in Grassy Pond Conservation Area for part of the walkway