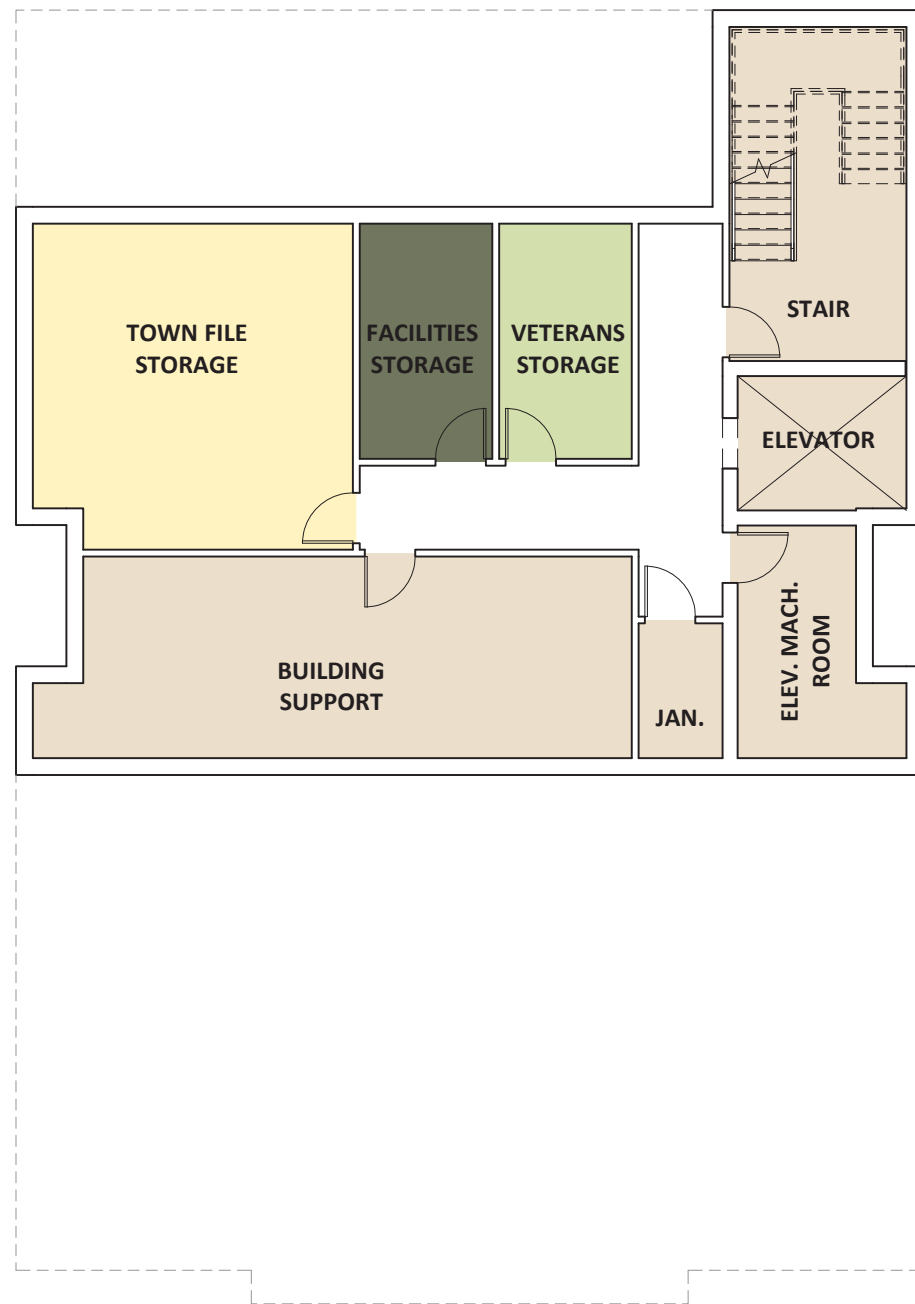
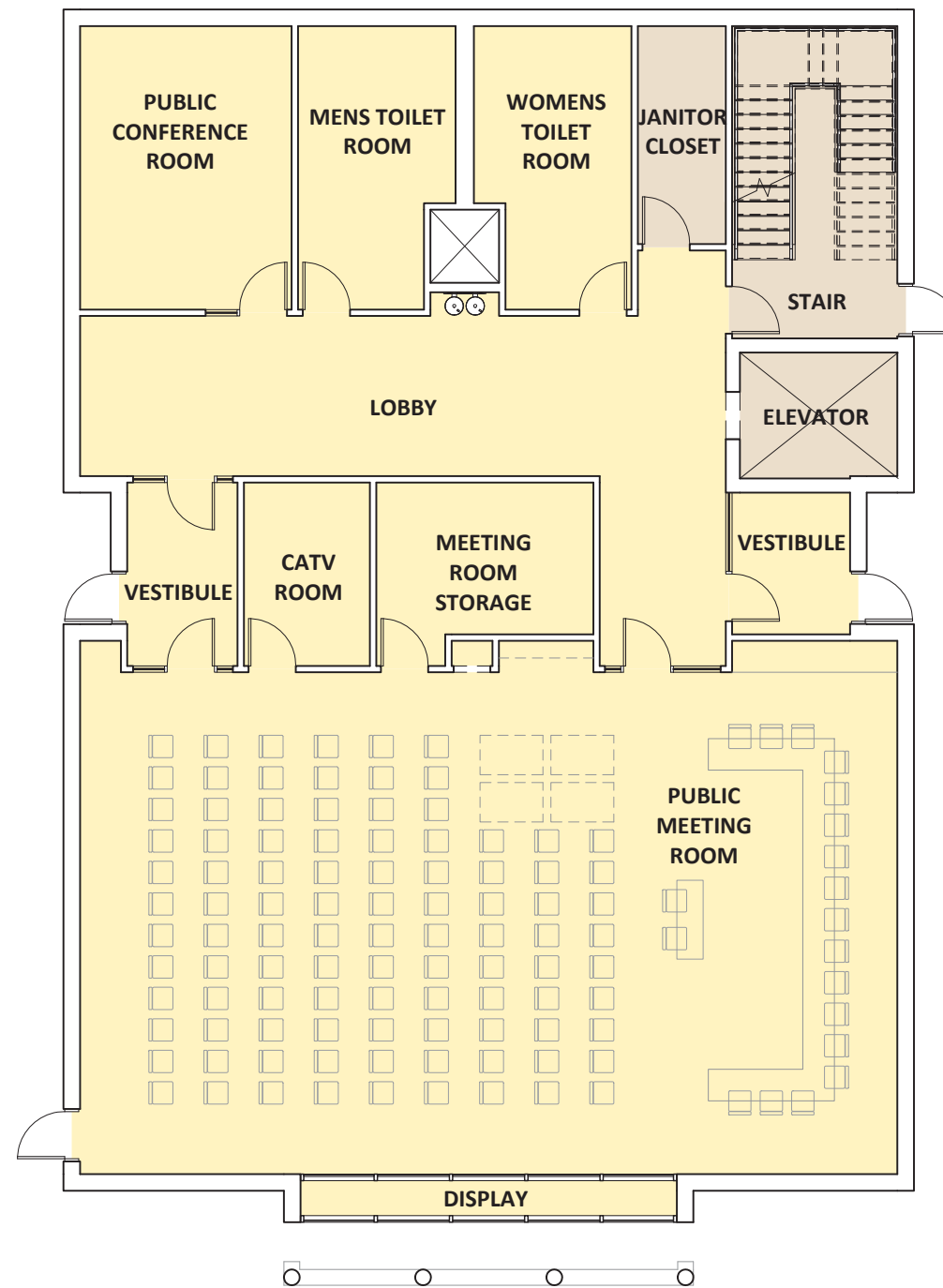


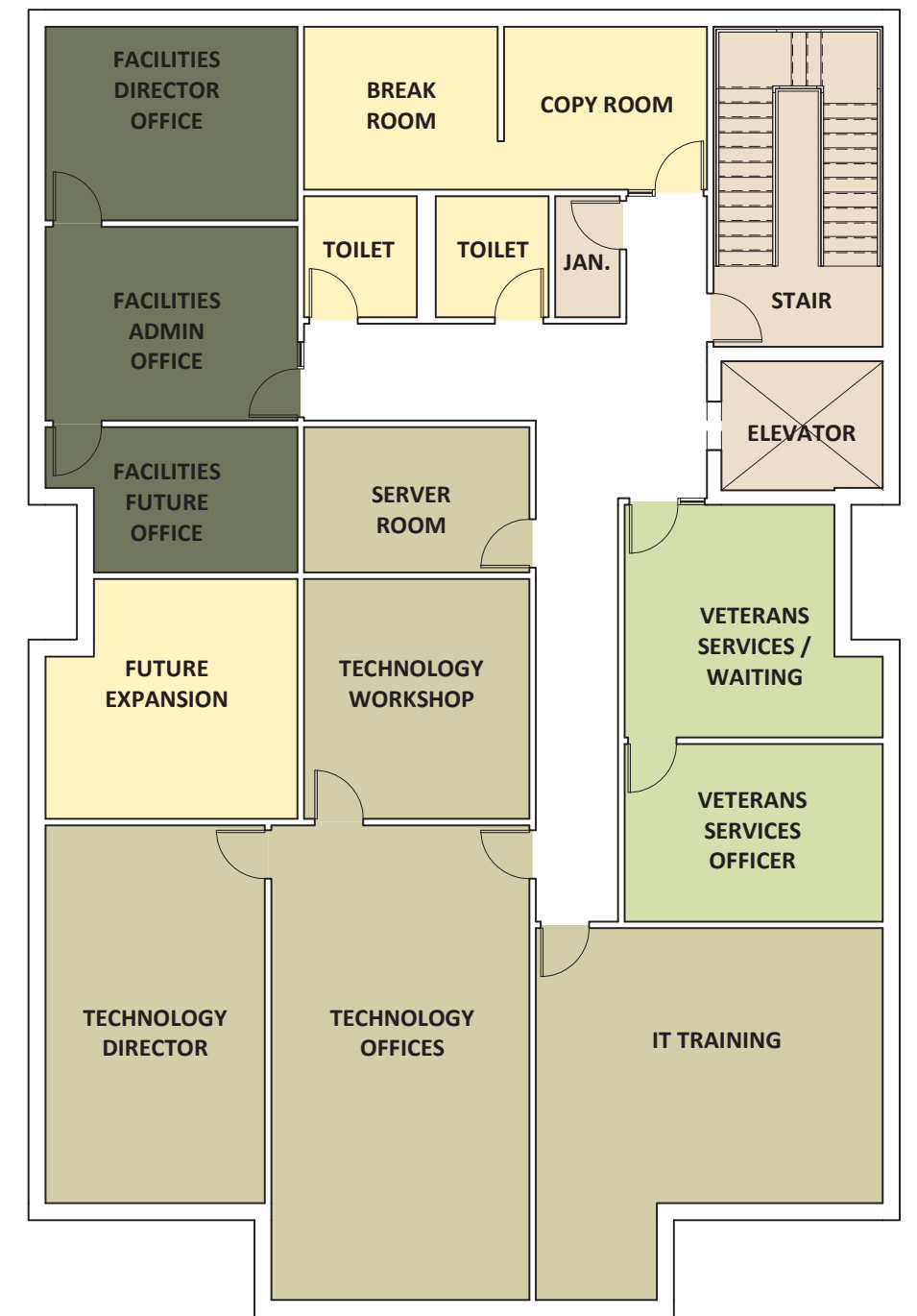
WESTFORD NEW CENTER BUILDING



BASEMENT - 1,922 GSF



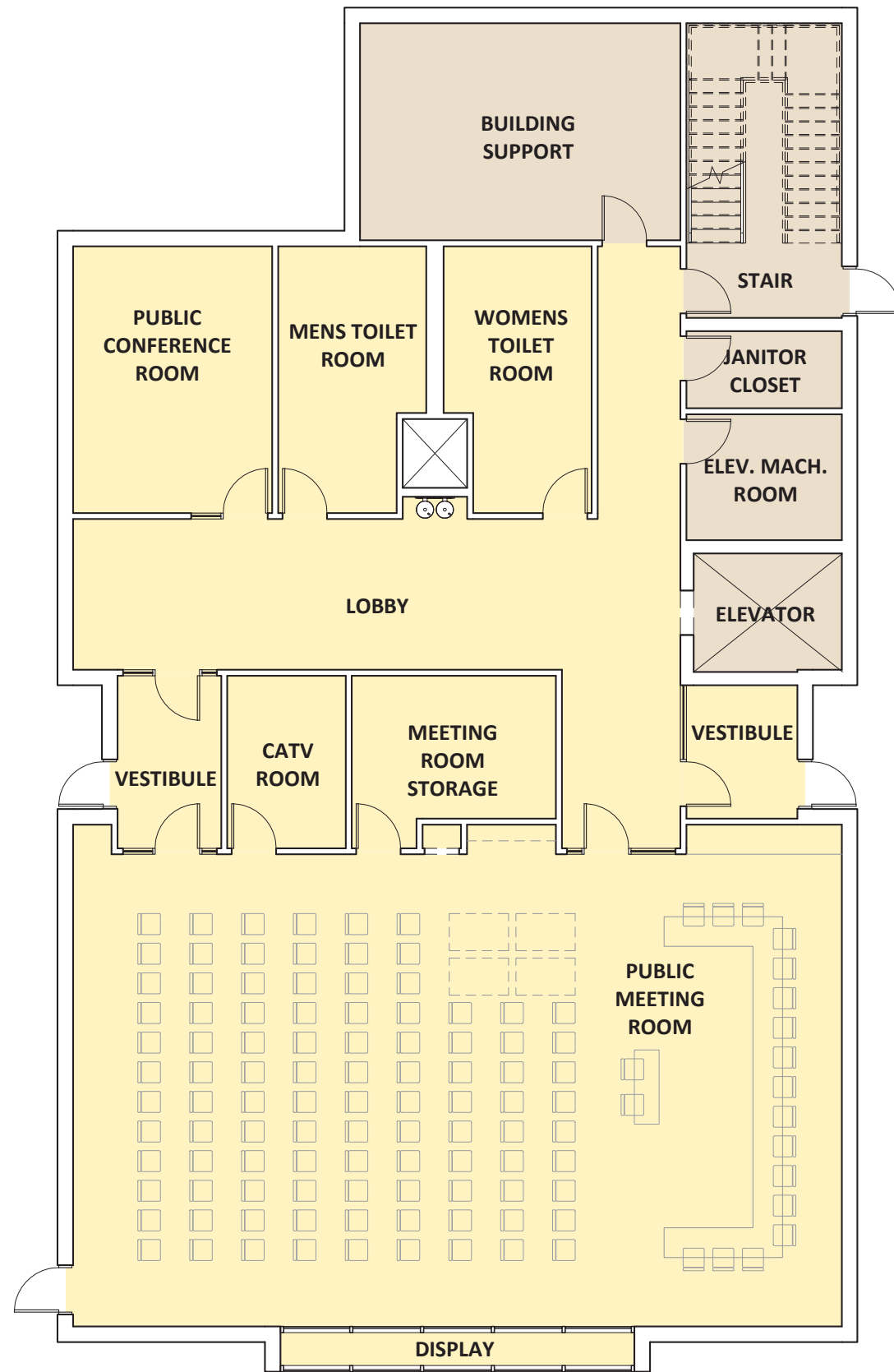
FIRST FLOOR - 4,052 GSF



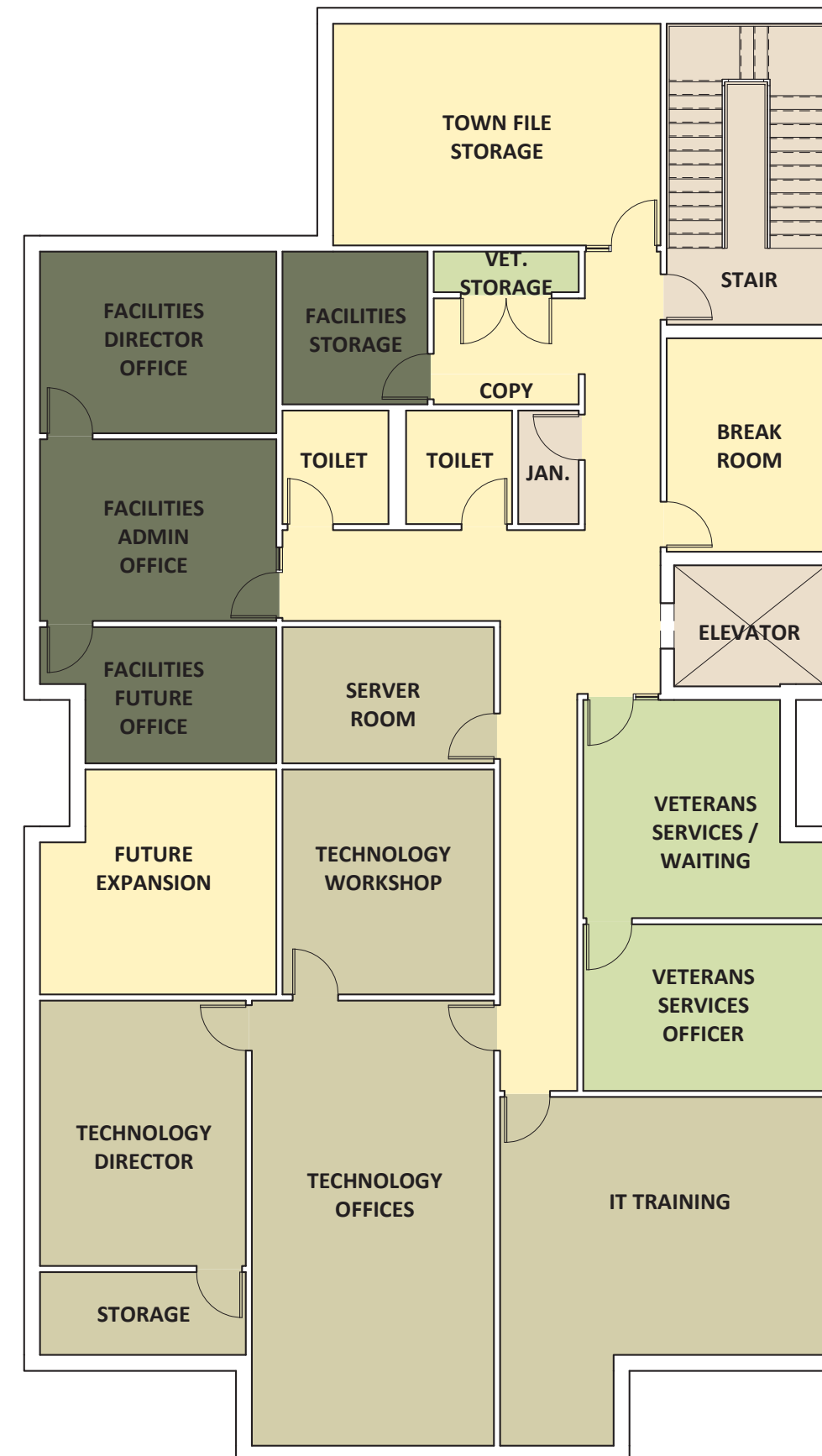
SECOND FLOOR - 4,156 GSF

- PUBLIC & SHARED SPACES
- TECHNOLOGY DEPARTMENT
- VETERANS SERVICES
- FACILITIES DEPARTMENT
- BUILDING SUPPORT

WESTFORD NEW CENTER BUILDING



FIRST FLOOR - 4,573 GSF



SECOND FLOOR - 4,677 GSF

- PUBLIC & SHARED SPACES
- TECHNOLOGY DEPARTMENT
- VETERANS SERVICES
- FACILITIES DEPARTMENT
- BUILDING SUPPORT

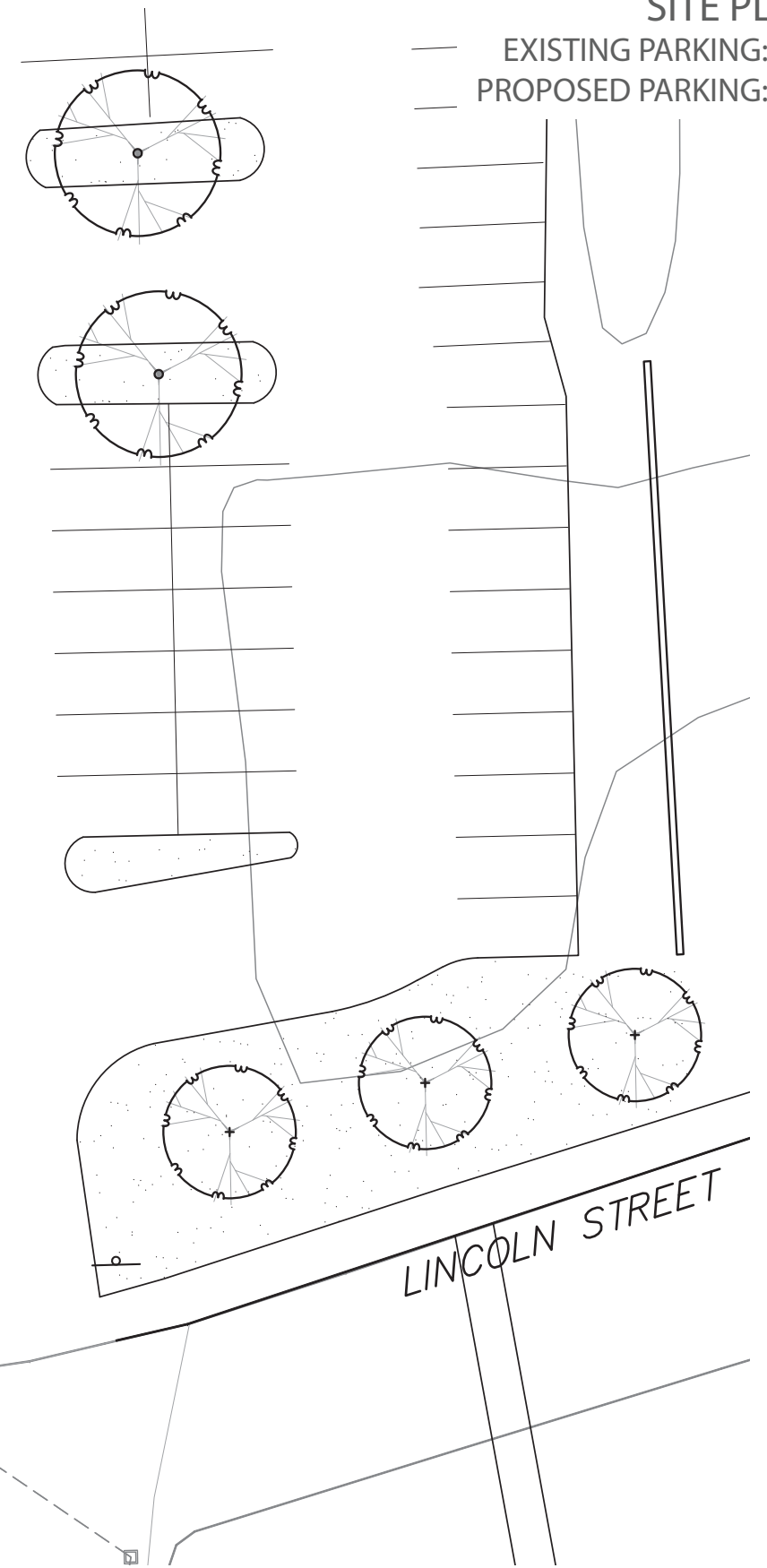
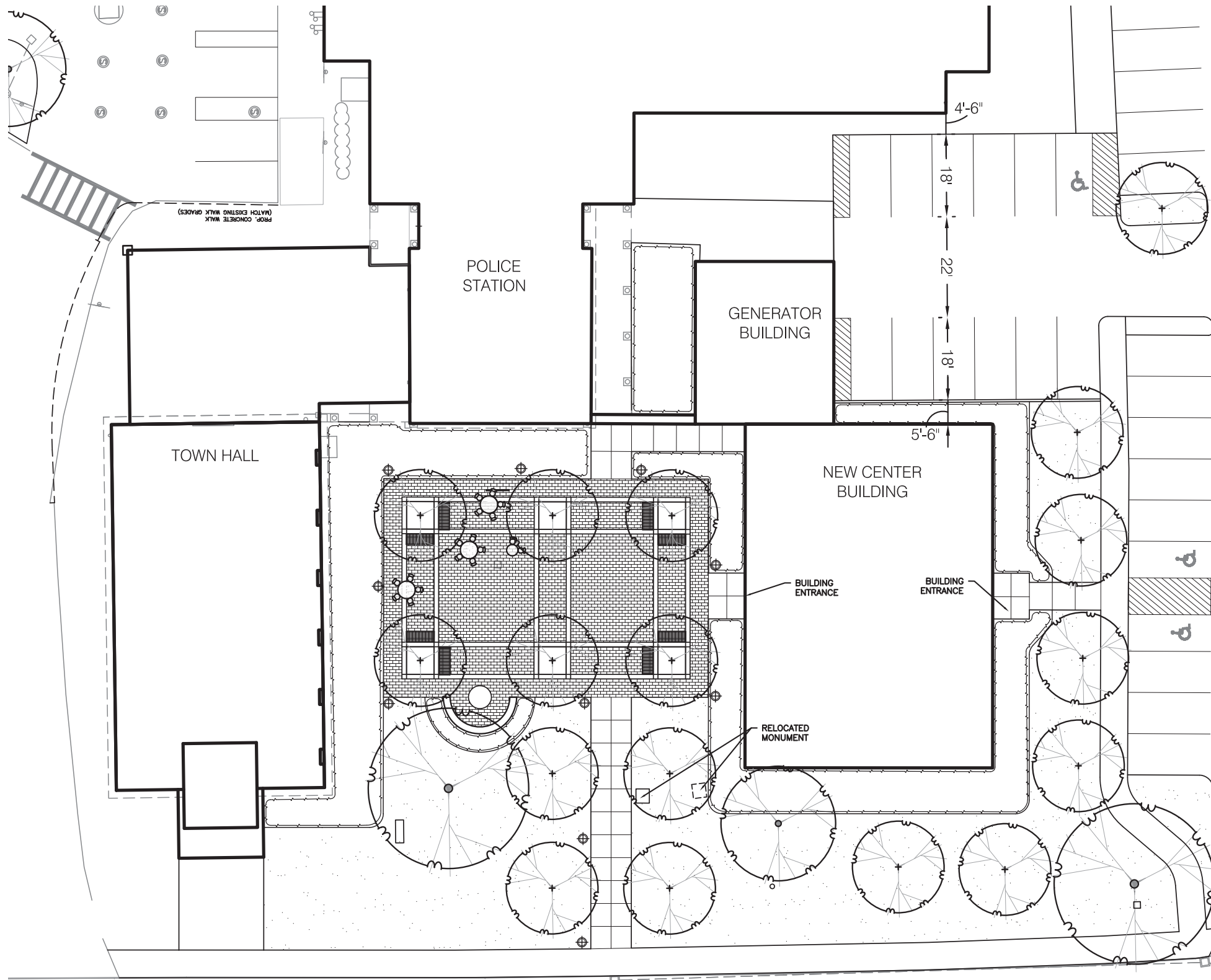
WESTFORD NEW CENTER BUILDING

View from Town Green



WESTFORD NEW CENTER BUILDING SITE PLAN

EXISTING PARKING: 135
PROPOSED PARKING: 147



MAIN STREET