

## Westford Museum

### Restore, Educate, Maintain

Using these guidelines, the Westford Historic Commission is proud to present the 3-D Scan of the Westford Museum.

On Thursday May 31, 2012 the Westford Museum entered into the new world of 3-D Scanning. Referred to as LIDAR or Light Detection and Ranging, it will be used for Education Programs for the visiting school groups starting next year. This technique will also offer remote viewing of one of the gems of the Town of Westford's historic resources.

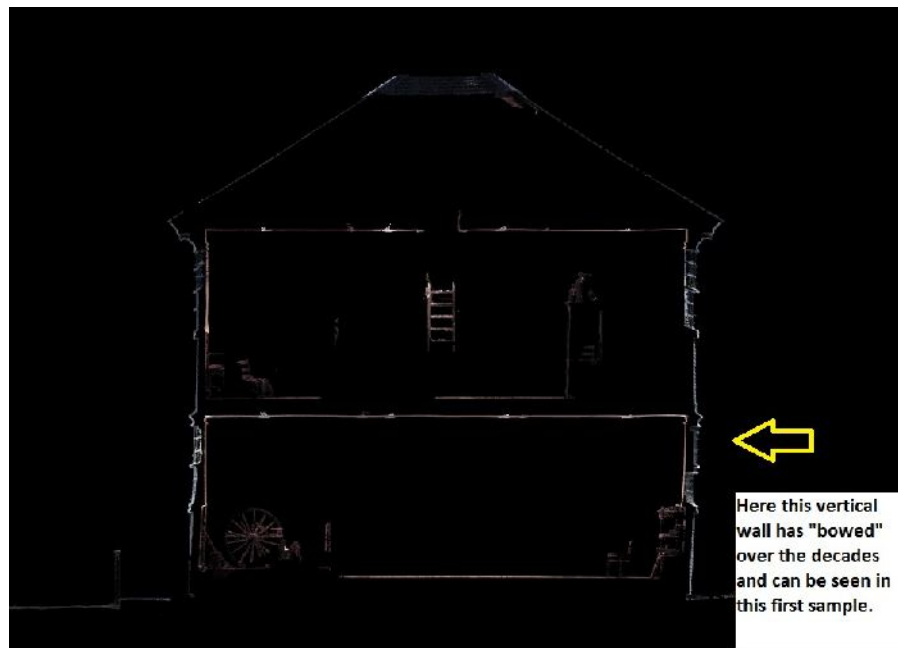


With the full scan completed, the processing of the data for use with public education programs and recording of structural information, is underway.



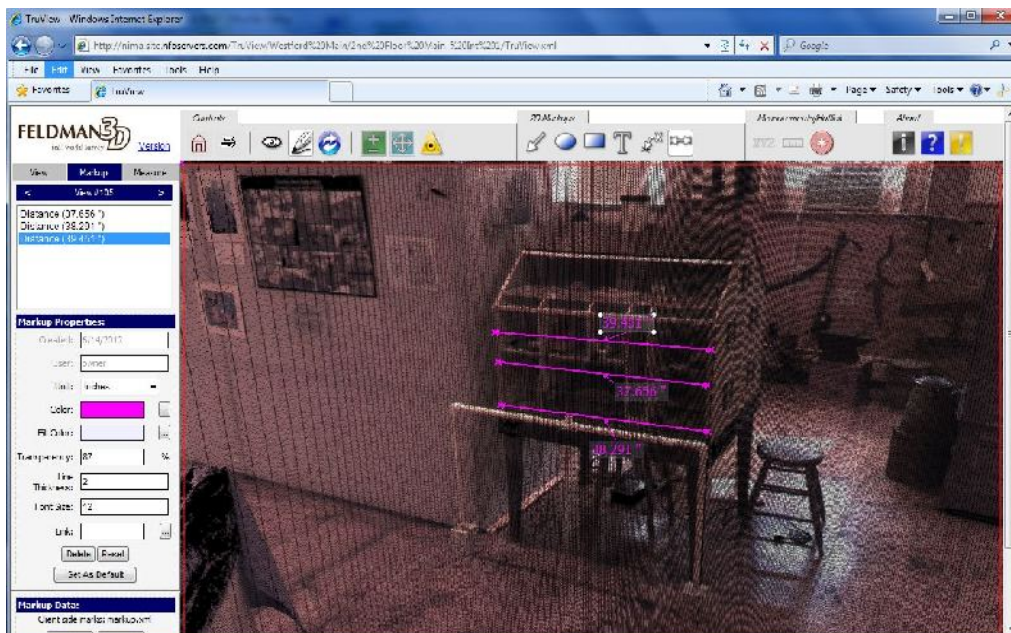
Here, the visual information of the building interior has opened up to the viewer, both allowing the museum's rich collection of history, but also the incredible bell tower structure now visible in the attic space. This data along with the ability to document and measure, will assist with the future structure

maintenance and but also with the ongoing decayed beam location and replacement. Another benefit of this will be the study of the aging structure in a way previously only possible by removing plaster wall covering and examining the deflection of the wall. Here is an early hint at this view being constructed.



A closer, measurable rendition will assist in the understanding of the integrity of the structure as well as future maintenance decisions.

For visiting Westford School groups, a fun measuring technique will allow students to interact with the museum like never before.



Yet, the most promising of the immediate benefits of this scan is expected to be the "Fly-Through" video currently being constructed for the benefit of Westford residents, students and visitors. This technique has been applied to the Massachusetts State House and the Paul Revere house with great response from the public. Over the next few months, it will be possible to view the museum interior, exterior, and architectural nuances like never before and by engaging the community, the Westford Museum will stand as a symbol of the historic pride and ownership of the town.

The scan was made possible by the Westford Historic Commission, and the firm of

**Harry R. Feldman, Inc**  
**112 Shawmut Avenue, 4th floor**  
**Boston, MA 02118**  
**[www.feldman3D.com](http://www.feldman3D.com)**